

LM195/LM395 Ultra Reliable Power Transistors

General Description

The LM195/LM395 are fast, monolithic power transistors with complete overload protection. These devices, which act as high gain power transistors, have included on the chip, current limiting, power limiting, and thermal overload protection making them virtually impossible to destroy from any type of overload. In the standard TO-3 transistor power package, the LM195 will deliver load currents in excess of 1.0A and can switch 40V in 500 ns.

The inclusion of thermal limiting, a feature not easily available in discrete designs, provides virtually absolute protection against overload. Excessive power dissipation or inadequate heat sinking causes the thermal limiting circuitry to turn off the device preventing excessive heating.

The LM195 offers a significant increase in reliability as well as simplifying power circuitry. In some applications, where protection is unusually difficult, such as switching regulators, lamp or solenoid drivers where normal power dissipation is low, the LM195 is especially advantageous.

The LM195 is easy to use and only a few precautions need be observed. Excessive collector to emitter voltage can destroy the LM195 as with any power transistor. When the device is used as an emitter follower with low source impedance, it is necessary to insert a 5.0k resistor in series with the base lead to prevent possible emitter follower oscillations.

Although the device is usually stable as an emitter follower, the resistor eliminates the possibility of trouble without degrading performance. Finally, since it has good high frequency response, supply bypassing is recommended.

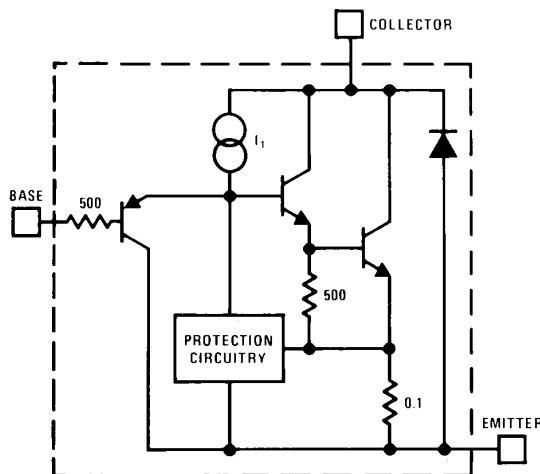
For low-power applications (under 100 mA), refer to the LP395 Ultra Reliable Power Transistor.

The LM195/LM395 are available in standard TO-3 power packages and solid Kovar TO-5. The LM195 is rated for operation from -55°C to $+150^{\circ}\text{C}$ and the LM395 from 0°C to $+125^{\circ}\text{C}$.

Features

- Internal thermal limiting
- Greater than 1.0A output current
- $3.0\ \mu\text{A}$ typical base current
- 500 ns switching time
- 2.0V saturation
- Base can be driven up to 40V without damage
- Directly interfaces with CMOS or TTL
- 100% electrical burn-in

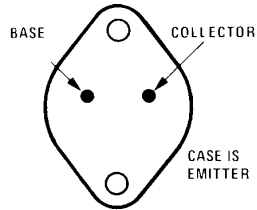
Simplified Circuit



TL/H/6009-1

Connection Diagrams

TO-3 Metal Can Package

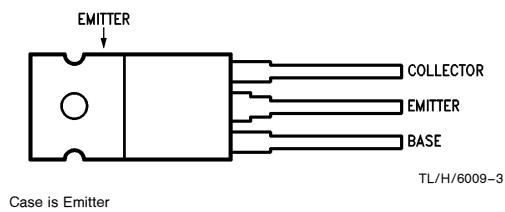


Bottom View

Order Number LM195K/883
See NS Package Number K02A

TL/H/6009-2

TO-220 Plastic Package

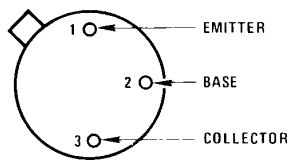


Top View

Order Number LM395T
See NS Package Number T03B

TL/H/6009-3

TO-5 Metal Can Package



CASE IS EMITTER

Bottom View

Order Number LM195H/883
See NS Package Number H03B

TL/H/6009-4

Absolute Maximum Ratings

If Military/Aerospace specified devices are required, please contact the National Semiconductor Sales Office/Distributors for availability and specifications.

Collector to Emitter Voltage

LM195 42V
LM395 36V

Collector to Base Voltage

LM195 42V
LM395 36V

Base to Emitter Voltage (Forward)

LM195 42V
LM395 36V

Base to Emitter Voltage (Reverse)

20V

Collector Current

Internally Limited

Power Dissipation

Internally Limited

Operating Temperature Range

LM195 -55°C to +150°C
LM395 0°C to +125°C

Storage Temperature Range

-65°C to +150°C

Lead Temperature (Soldering, 10 sec.)

260°C

Preconditioning

100% Burn-In In Thermal Limit

Electrical Characteristics (Note 1)

| Parameter | Conditions | LM195 | | | LM395 | | | Units |
|----------------------------------------------|-------------------------------------------------------------|-------|-----|-----|-------|-----|-----|--------------|
| | | Min | Typ | Max | Min | Typ | Max | |
| Collector-Emitter Operating Voltage (Note 3) | $I_Q \leq I_C \leq I_{MAX}$ | | | 42 | | | 36 | V |
| Base to Emitter Breakdown Voltage | $0 \leq V_{CE} \leq V_{CEMAX}$ | 42 | | | 36 | 60 | | V |
| Collector Current TO-3, TO-220 TO-5 | $V_{CE} \leq 15V$ | 1.2 | 2.2 | | 1.0 | 2.2 | | A |
| | $V_{CE} \leq 7.0V$ | 1.2 | 1.8 | | 1.0 | 1.8 | | A |
| Saturation Voltage | $I_C \leq 1.0A, T_A = 25^\circ C$ | | 1.8 | 2.0 | | 1.8 | 2.2 | V |
| Base Current | $0 \leq I_C \leq I_{MAX}$ $0 \leq V_{CE} \leq V_{CEMAX}$ | | 3.0 | 5.0 | | 3.0 | 10 | μA |
| Quiescent Current (I_Q) | $V_{be} = 0$ $0 \leq V_{CE} \leq V_{CEMAX}$ | | 2.0 | 5.0 | | 2.0 | 10 | mA |
| Base to Emitter Voltage | $I_C = 1.0A, T_A = +25^\circ C$ | | 0.9 | | | 0.9 | | V |
| Switching Time | $V_{CE} = 36V, R_L = 36\Omega$, $T_A = 25^\circ C$ | | 500 | | | 500 | | ns |
| Thermal Resistance Junction to Case (Note 2) | TO-3 Package (K) | | 2.3 | 3.0 | | 2.3 | 3.0 | $^\circ C/W$ |
| | TO-5 Package (H) | | 12 | 15 | | 12 | 15 | $^\circ C/W$ |
| | TO-220 Package (T) | | | | | 4 | 6 | $^\circ C/W$ |

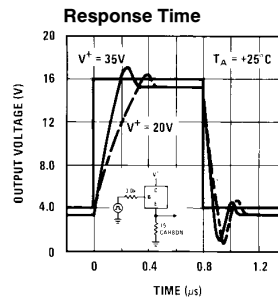
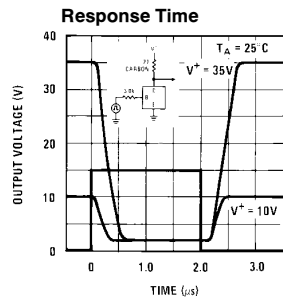
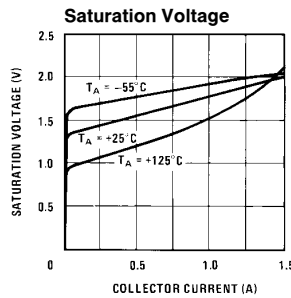
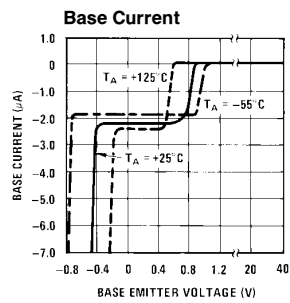
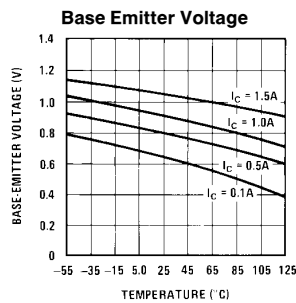
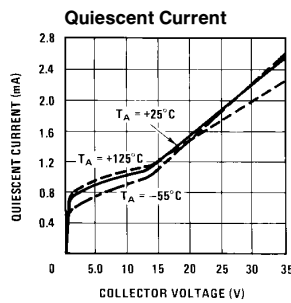
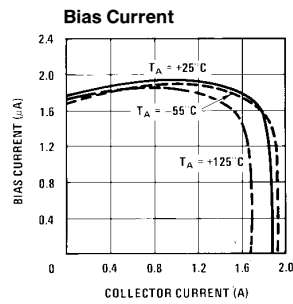
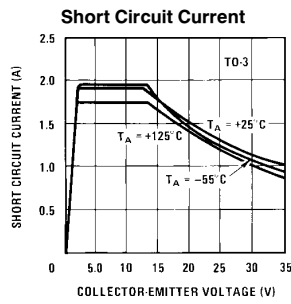
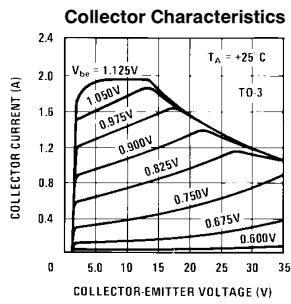
Note 1: Unless otherwise specified, these specifications apply for $-55^\circ C \leq T_J \leq +150^\circ C$ for the LM195 and $0^\circ C \leq +125^\circ C$ for the LM395.

Note 2: Without a heat sink, the thermal resistance of the TO-5 package is about $+150^\circ C/W$, while that of the TO-3 package is $+35^\circ C/W$.

Note 3: Selected devices with higher breakdown available.

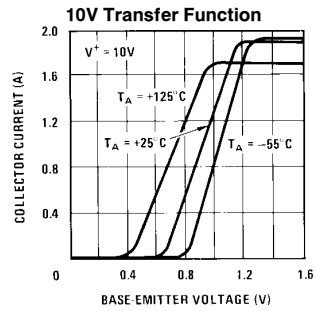
Note 4: Refer to RETS195H and RETS195K drawings of military LM195H and LM195K versions for specifications.

Typical Performance Characteristics (for K and T Packages)

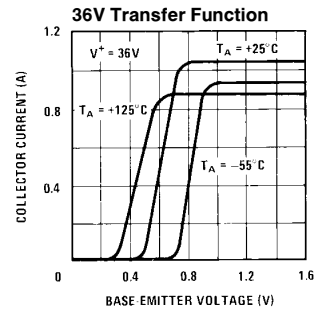


TL/H/6009-6

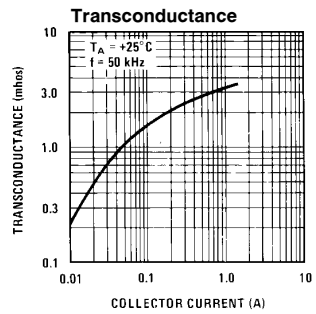
Typical Performance Characteristics (for K and T Packages) (Continued)



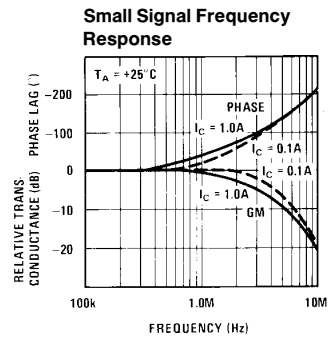
TL/H/6009-7



TL/H/6009-8



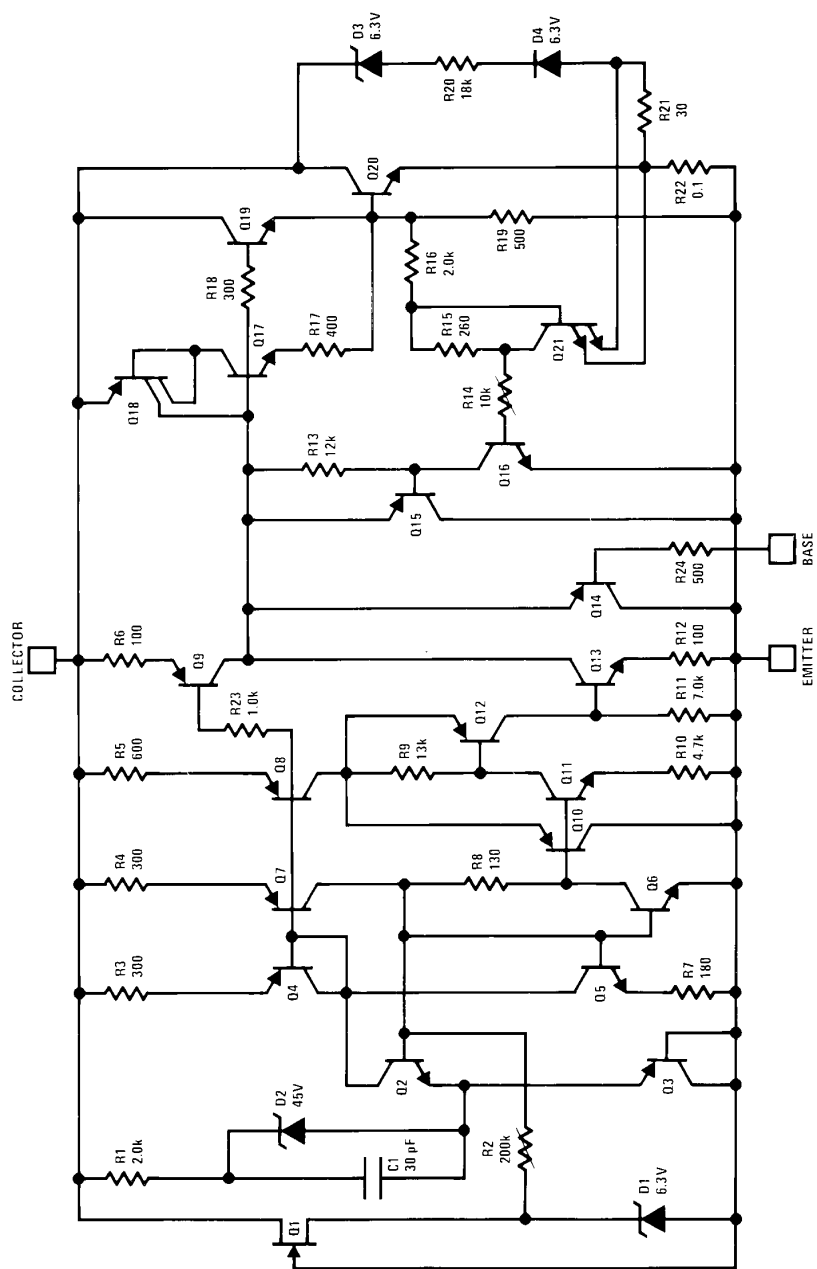
TL/H/6009-9



TL/H/6009-10

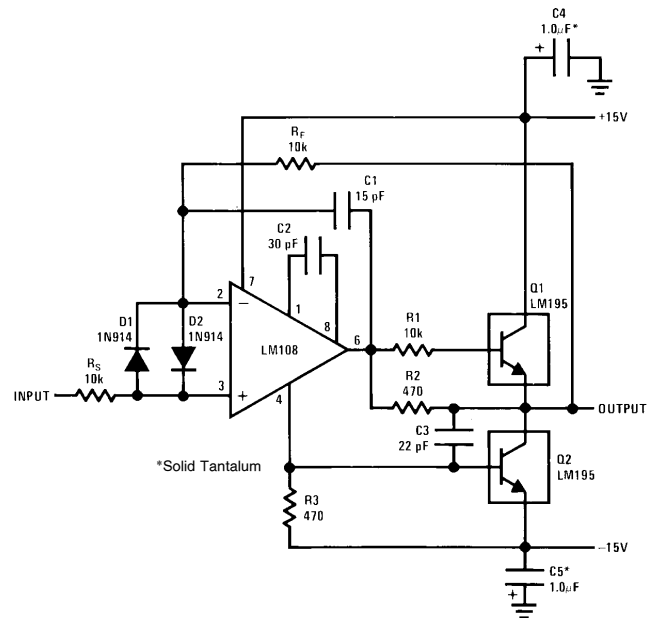
Schematic Diagram

TL/H/6009-11



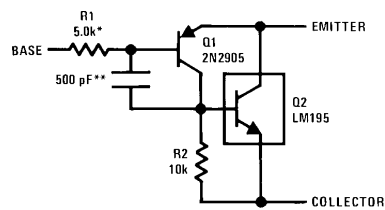
Typical Applications

1.0 Amp Voltage Follower



TL/H/6009-12

Power PNP

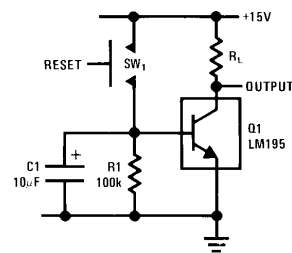


TL/H/6009-13

*Protects against excessive base drive

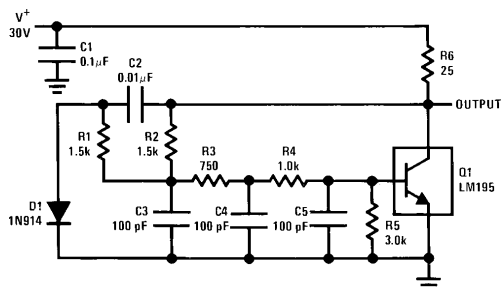
**Needed for stability

Time Delay



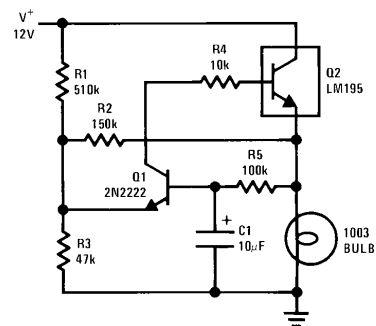
TL/H/6009-14

1.0 MHz Oscillator



TL/H/6009-15

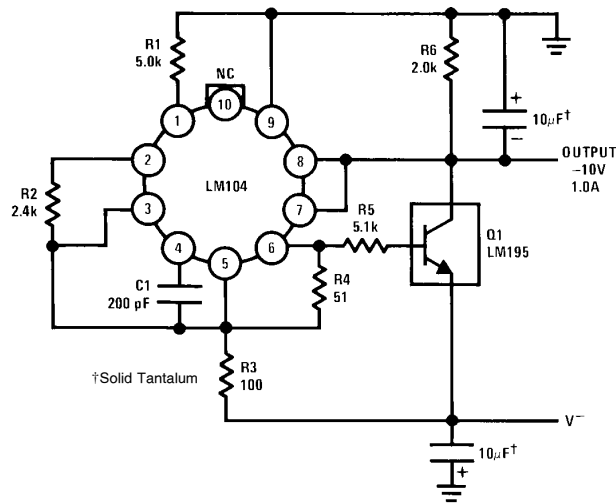
1.0 Amp Lamp Flasher



TL/H/6009-16

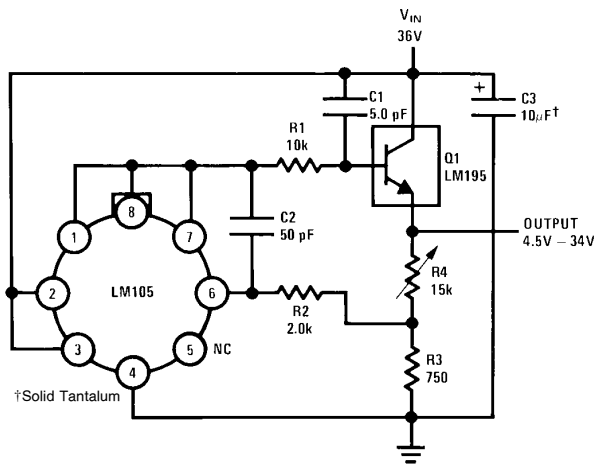
Typical Applications (Continued)

1.0 Amp Negative Regulator



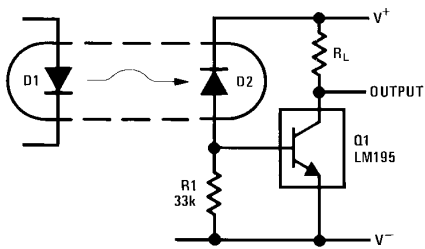
TL/H/6009-17

1.0 Amp Positive Voltage Regulator



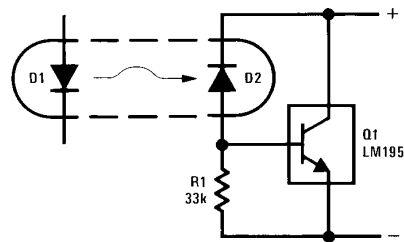
TL/H/6009-18

Fast Optically Isolated Switch



TL/H/6009-19

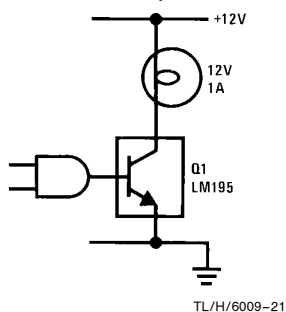
Optically Isolated Power Transistor



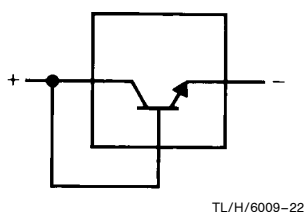
TL/H/6009-20

Typical Applications (Continued)

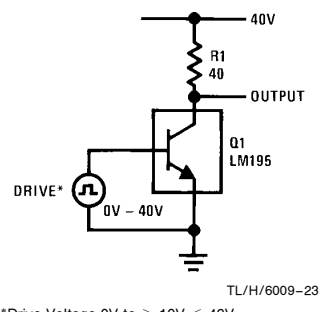
CMOS or TTL Lamp Interface



Two Terminal Current Limiter

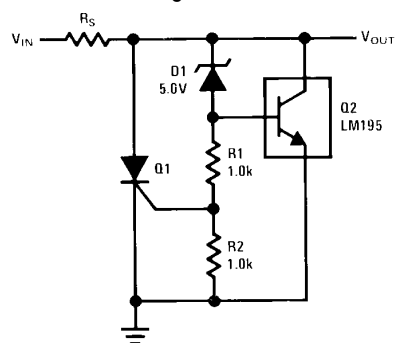


40V Switch

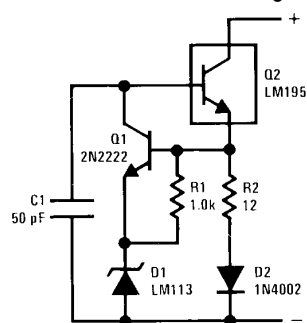


*Drive Voltage 0V to $\geq 10V \leq 42V$

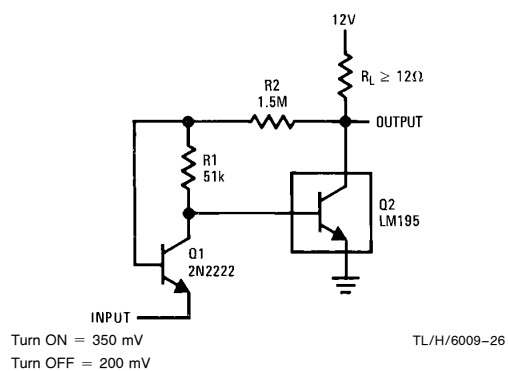
6.0V Shunt Regulator with Crowbar



Two Terminal 100 mA Current Regulator

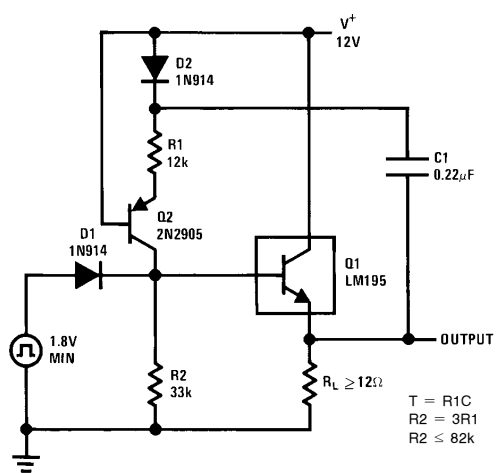


Low Level Power Switch



Turn ON = 350 mV
Turn OFF = 200 mV

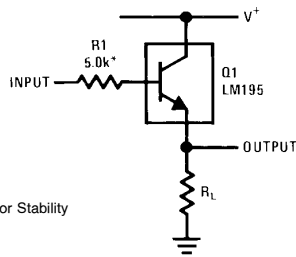
Power One-Shot



$T = R1C$
 $R2 = 3R1$
 $R2 \leq 82k$

Typical Applications (Continued)

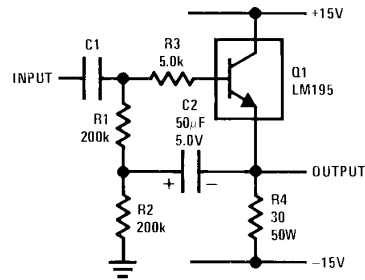
Emitter Follower



*Need for Stability

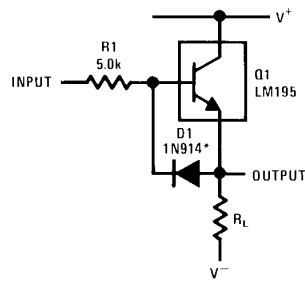
TL/H/6009-28

High Input Impedance AC Emitter Follower



TL/H/6009-29

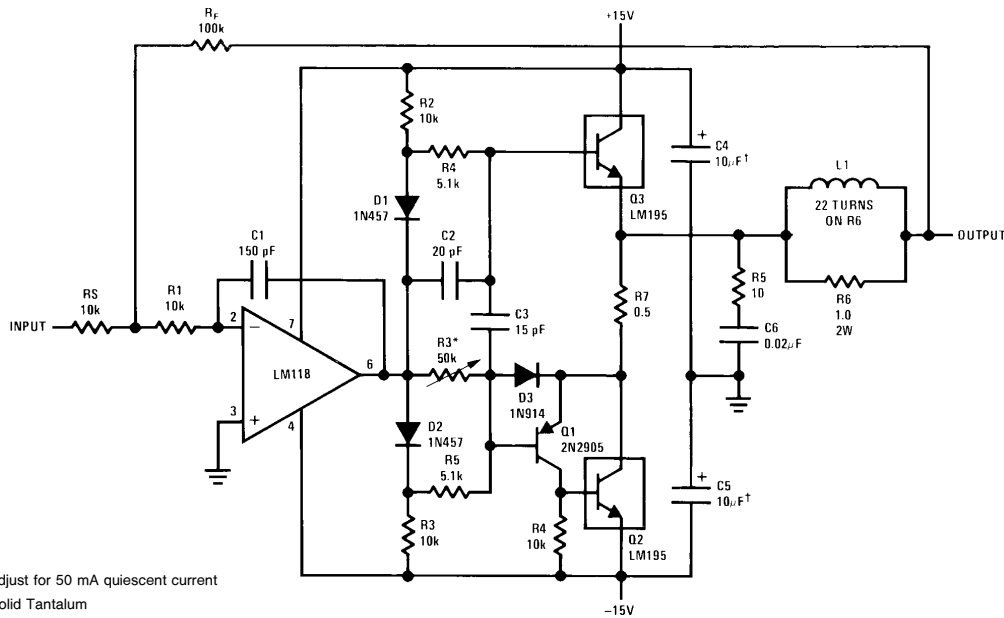
Fast Follower



TL/H/6009-30

*Prevents storage with fast fall time square wave drive

Power Op Amp



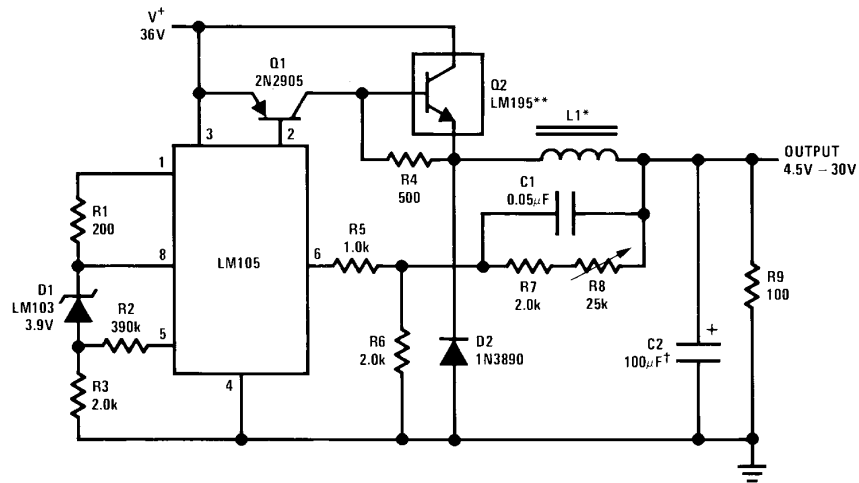
*Adjust for 50 mA quiescent current

†Solid Tantalum

TL/H/6009-31

Typical Applications (Continued)

6.0 Amp Variable Output Switching Regulator

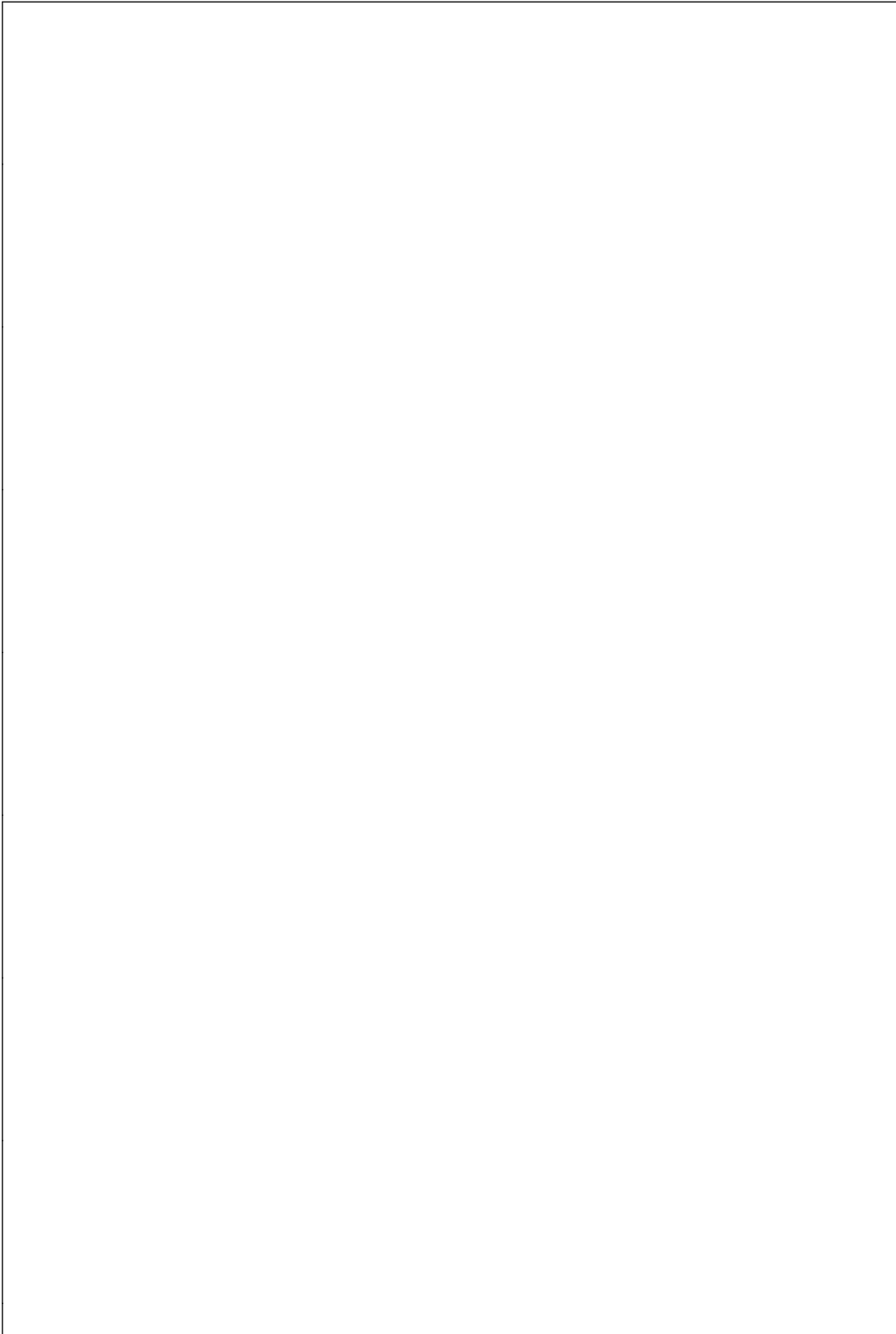


*Sixty turns wound on Arnold Type A-083081-2 core.

**Four devices in parallel

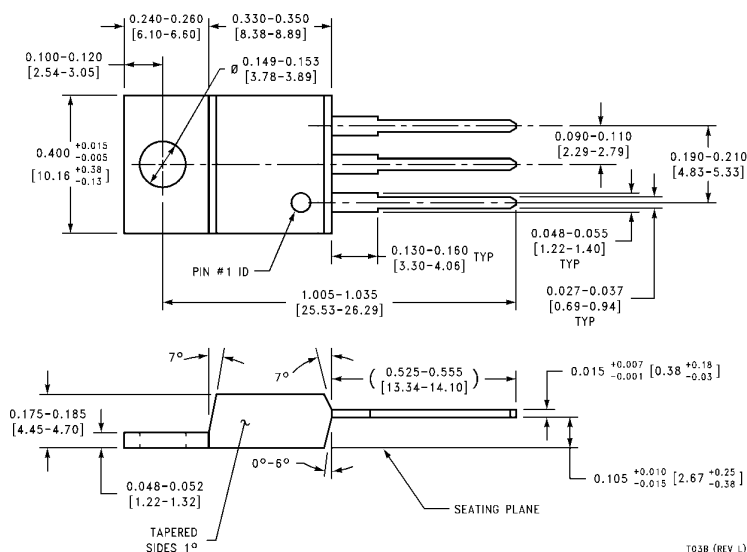
†Solid tantalum

TL/H/6009-32



[illegible][illegible]

13

Physical Dimensions inches (millimeters) (Continued)

**TO-220 Plastic Package
Order Number LM395T
NS Package Number T03B**

LIFE SUPPORT POLICY

NATIONAL'S PRODUCTS ARE NOT AUTHORIZED FOR USE AS CRITICAL COMPONENTS IN LIFE SUPPORT DEVICES OR SYSTEMS WITHOUT THE EXPRESS WRITTEN APPROVAL OF THE PRESIDENT OF NATIONAL SEMICONDUCTOR CORPORATION. As used herein:

1. Life support devices or systems are devices or systems which, (a) are intended for surgical implant into the body, or (b) support or sustain life, and whose failure to perform, when properly used in accordance with instructions for use provided in the labeling, can be reasonably expected to result in a significant injury to the user.
2. A critical component is any component of a life support device or system whose failure to perform can be reasonably expected to cause the failure of the life support device or system, or to affect its safety or effectiveness.



National Semiconductor Corporation
1111 West Bardin Road
Arlington, TX 76017
Tel: 1(800) 272-9959
Fax: 1(800) 737-7018

National Semiconductor Europe

Europe Fax: (+49) 0-180-530 85 86
Email: cnjwge@tevm2.nsc.com
Deutsch Tel: (+49) 0-180-530 85 85
English Tel: (+49) 0-180-532 78 32
Français Tel: (+49) 0-180-532 93 58
Italiano Tel: (+49) 0-180-534 16 80

**National Semiconductor
Hong Kong Ltd.**

Hong Kong Ltd.
13th Floor, Straight Block,
Ocean Centre, 5 Canton Rd.
Tsimshatsui, Kowloon
Hong Kong
Tel: (852) 2737-1600
Fax: (852) 2736-9960

**National Semiconductor
Japan Ltd.**

Tel: 81-043-299-2309
Fax: 81-043-299-2408